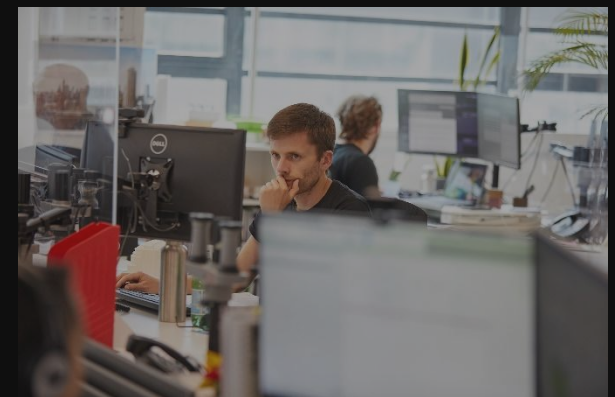
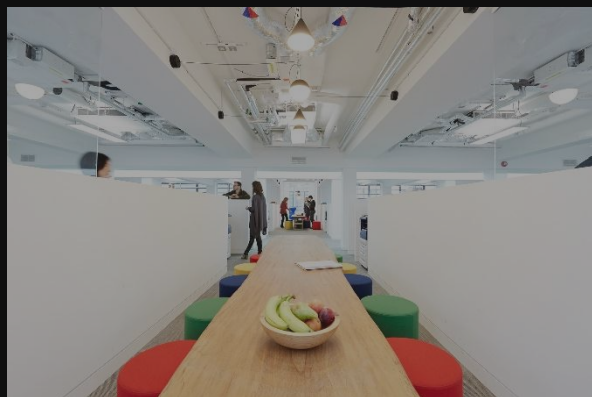
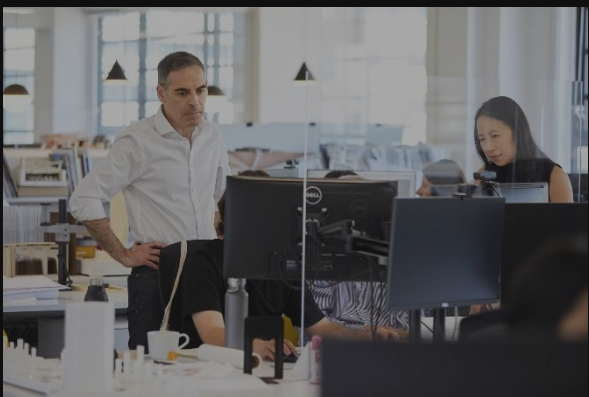
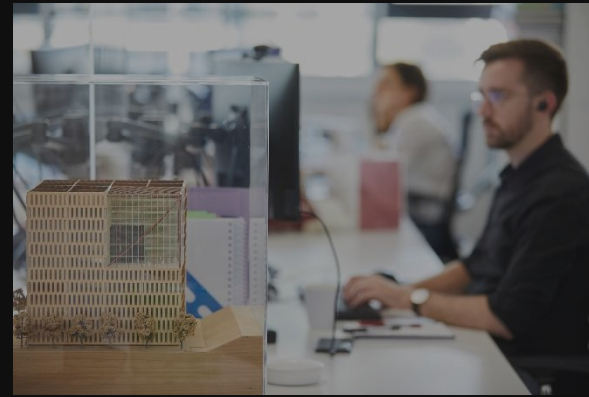
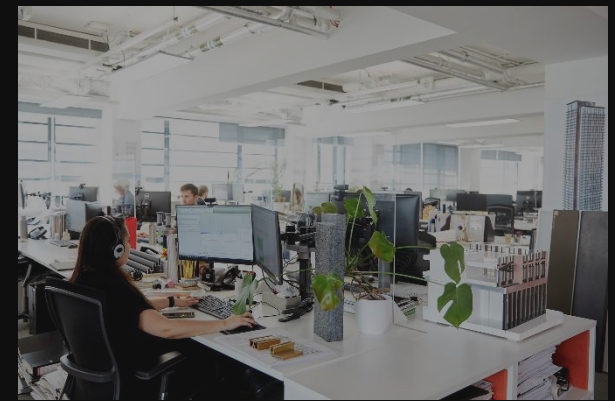
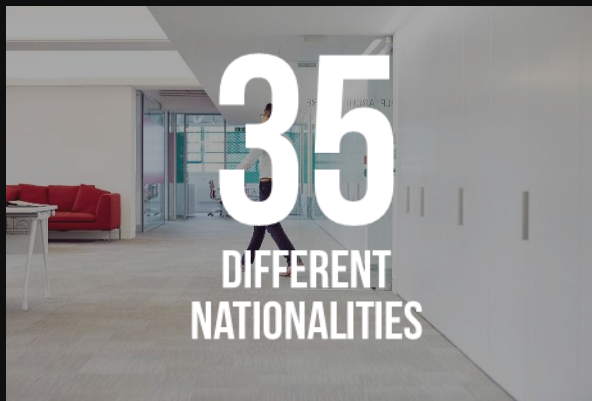
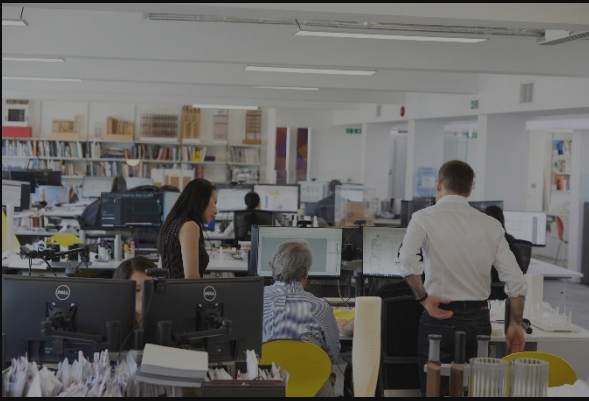




PLP / ARCHITECTURE

COPYRIGHT © 2025 PLP ARCHITECTURE LTD ALL RIGHTS RESERVED



650

PROJECTS
UNDERTAKEN
GLOBALLY

37

COUNTRIES

LONDON

TOKYO

SINGAPORE

PLP/ARCHITECTURE

100+

PROJECTS IN
LONDON





LONDON



TOKYO



SINGAPORE

PLP/ARCHITECTURE



PLP/LABS

DESIGN

Urban
Architecture
Interior
Product
Sustainability

RESEARCH

The Possible City
Digital Design Tools
User Experience
Material
Mobility

STRATEGY

Placemaking
Positioning
Workplace
Repurposing
Product Ideation

PLP/ARCHITECTURE



MASTERPLAN

NEXT GENERATION WORKPLACE – HUMAN ACTIVATION



WORLD-LEADING PLACES FOR RESEARCH AND SCIENCE



PLP/ARCHITECTURE

REDEFINED LIVING



RESIDENTIAL



PLP/ARCHITECTURE

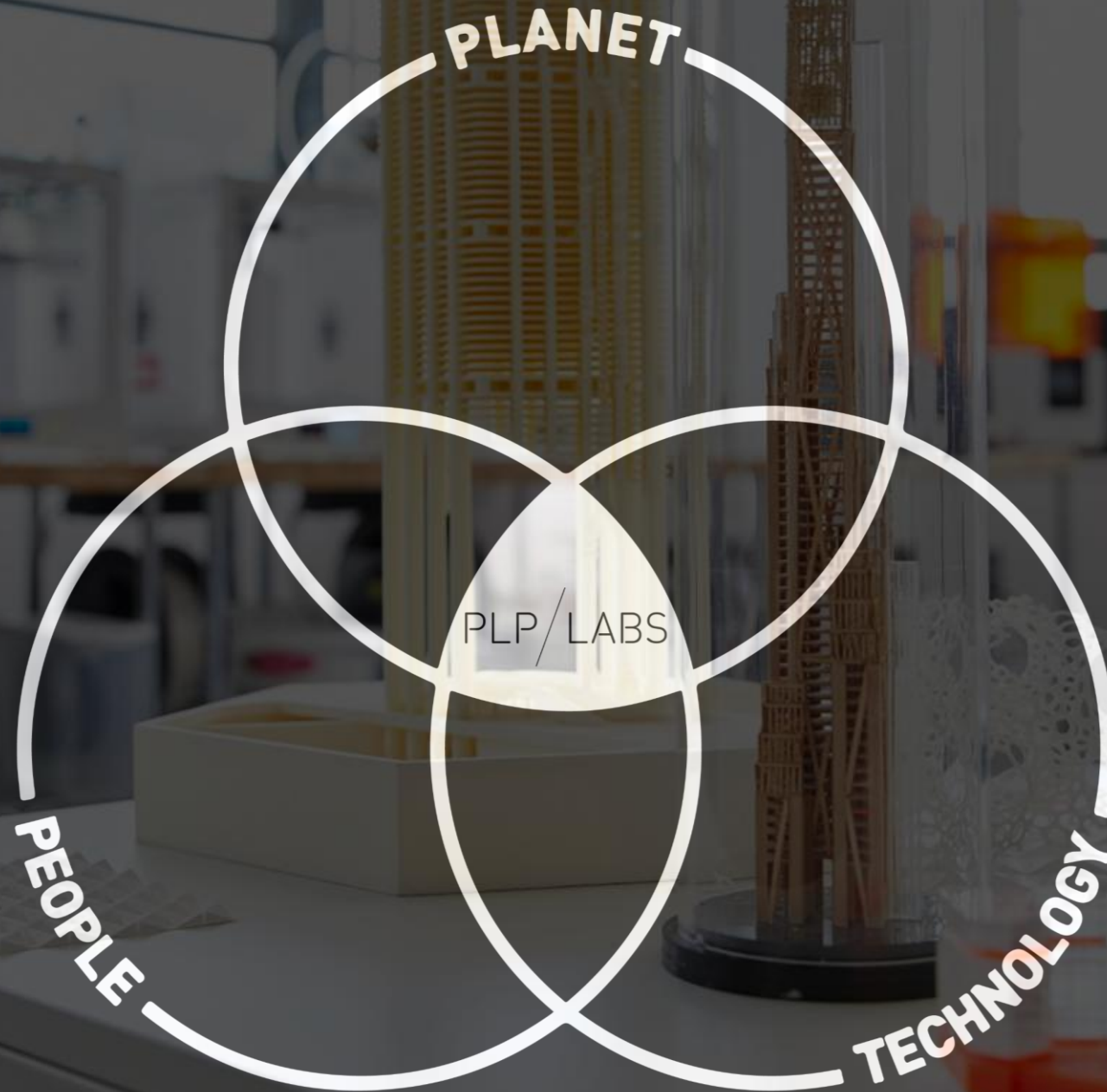


HOSPITALITY



PLP / LABS







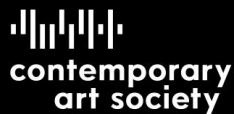
arthesia

ARUP

BUILT-ID

COMUZI

wework

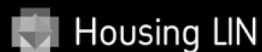


FUTURE\CITY



Gehl

Yandex



The Oxford Institute of
Population Ageing



RISE

Hines



NOTTINGHAM
TRENT UNIVERSITY



smithandwallwork
engineers

urban
systems
design



PLP/ARCHITECTURE

IUMO/V

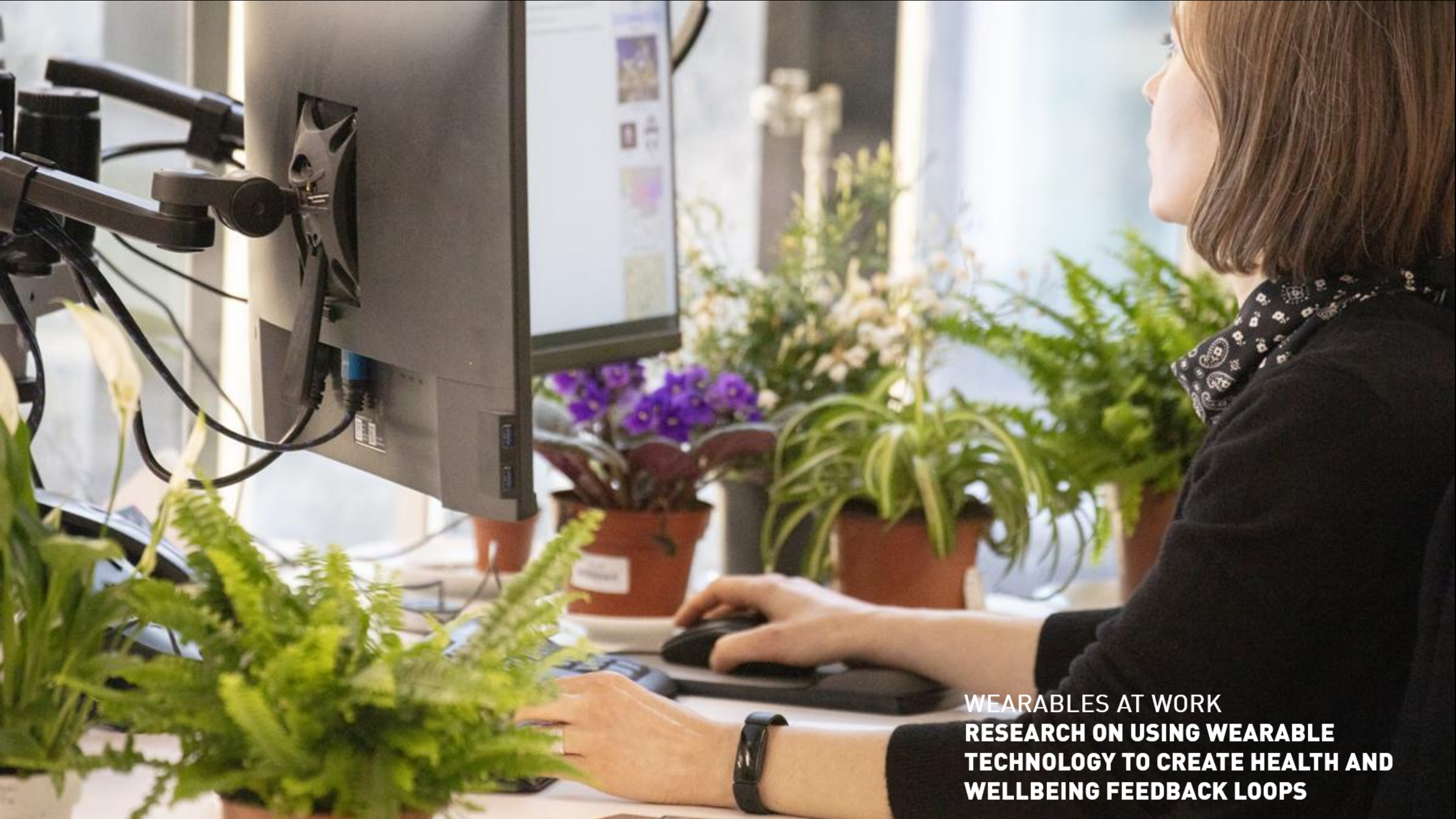
Loop-connected finuculators are integrated into the structural frames, eliminating the centre core and opening up to the tower floor. Innovates on traditional Vertical Transportation ideas in collaboration with Tyréns, Sweden.



300m Timber Tower Research

What is the high-rise tower of the 21st century? Developed in collaboration with specialist institutions such as Cambridge University, the structure/material of the 300m super tower was challenged in timber.





**WEARABLES AT WORK
RESEARCH ON USING WEARABLE
TECHNOLOGY TO CREATE HEALTH AND
WELLBEING FEEDBACK LOOPS**

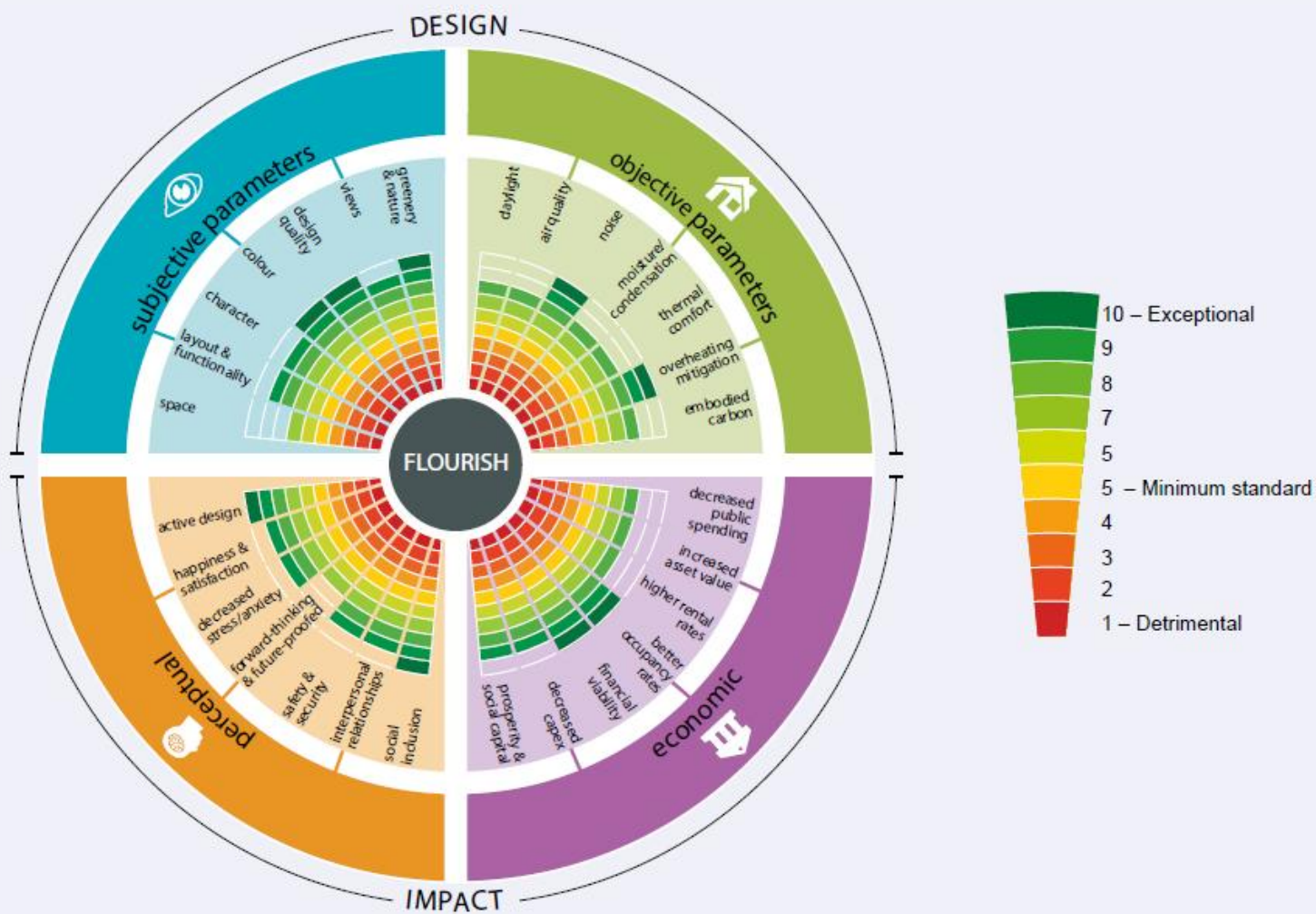


Figure 1
The Flourish model:²⁶ concept stage

Courtesy of Derek Clements-Croome; illustrated by Marylis Ramos and used by Joyce Chan with PLP Architecture

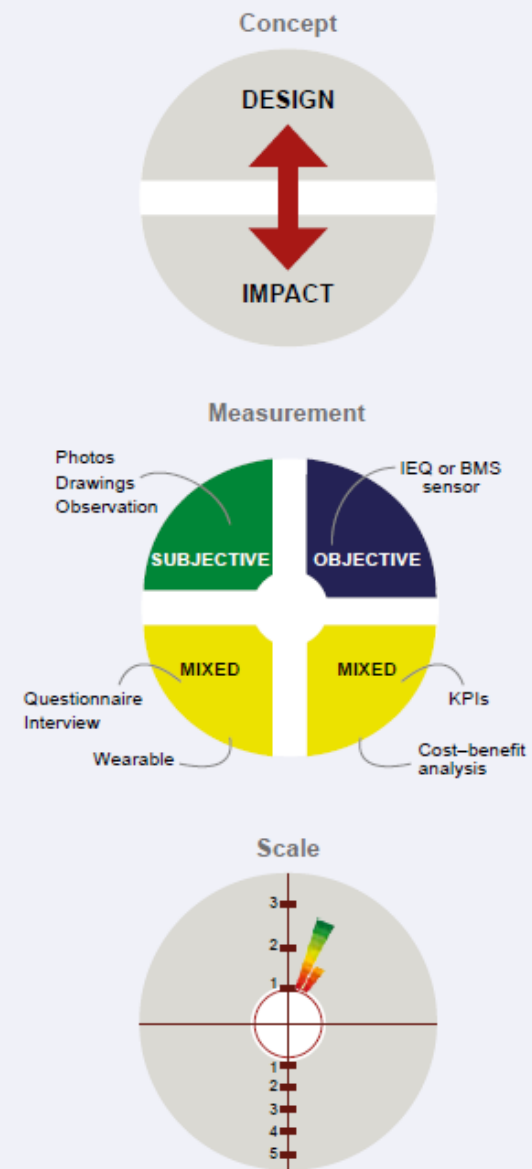
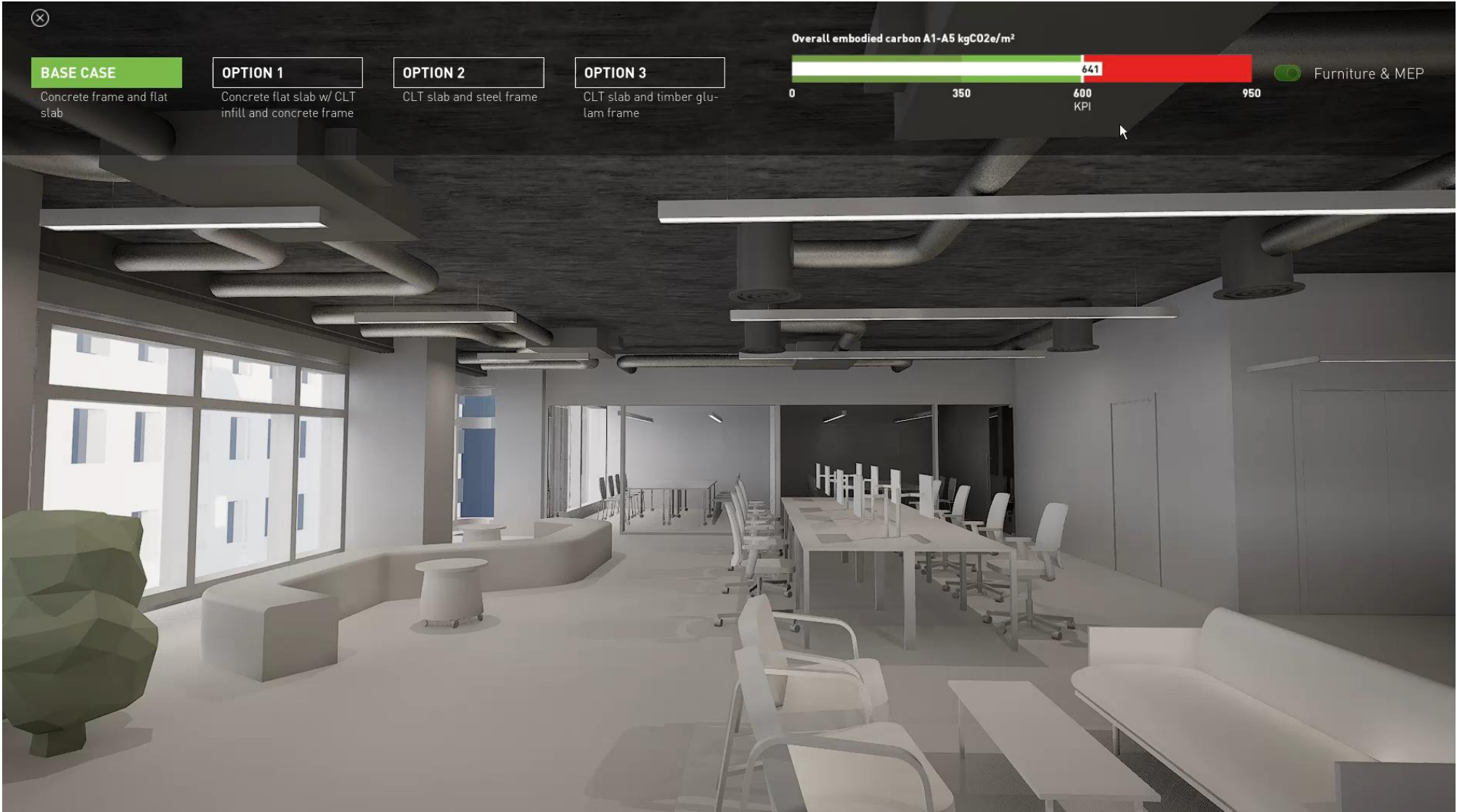


Figure 2
Conceptual diagrams showing how the Flourish model can be applied in practice

DATA VISUALISATION – STRUCTURAL EMBODIED CARBON



HUMAN CENTRIC TO LIFE CENTRIC

BANKSIDE YARDS

URBAN HYPERMIXITY



It's now been decided to hold
a festival of Britain in 1951



#LondonIsOpen

BANKSIDE YARDS

LONDON SE1

‘UK’S FIRST MAJOR MIXED-USE FOSSIL FUEL FREE DEVELOPMENT’

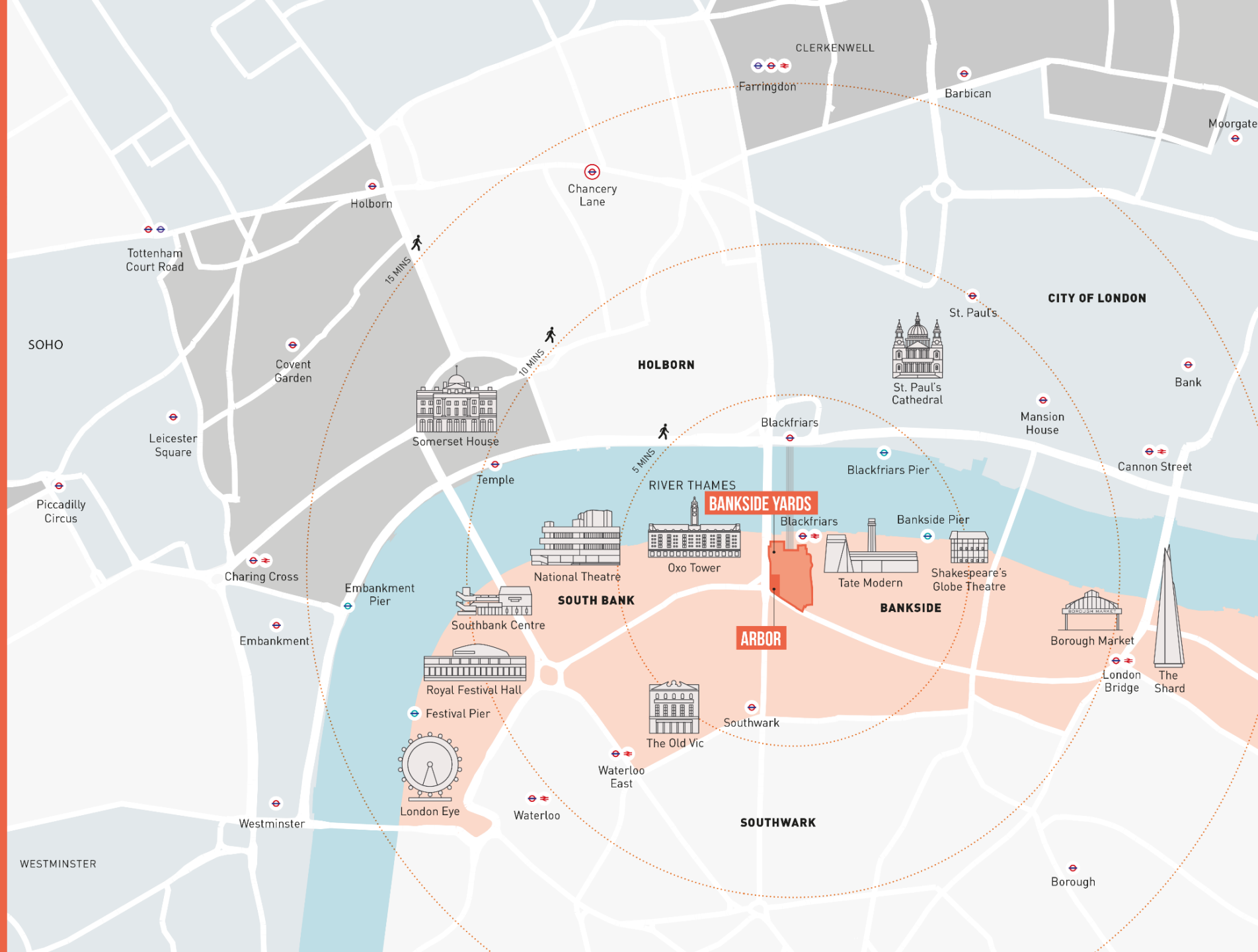


'ESTABLISH LONDON'S NEW CULTURAL NEIGHBOURHOOD'



LONDON HYPER- MIXITY

LONDON'S NEW CULTURAL NEIGHBOURHOOD



8 BUILDINGS & 8 PUBLIC REALM & 14 HISTORIC ARCHES



BANKSIDE YARDS

HYPER- MIXITY

CULTURE / ART

PUBLIC REALM

LIVE / WORK / SOCIAL

WELLNESS / NATURE

LOCAL / GLOBAL



Arbour, Bankside Yards, London, UK





NEIGHBOURHOOD





ARCHES

LONDON – CULTURAL HYPERMIXITY

MUSIC



PLAY



GREEN



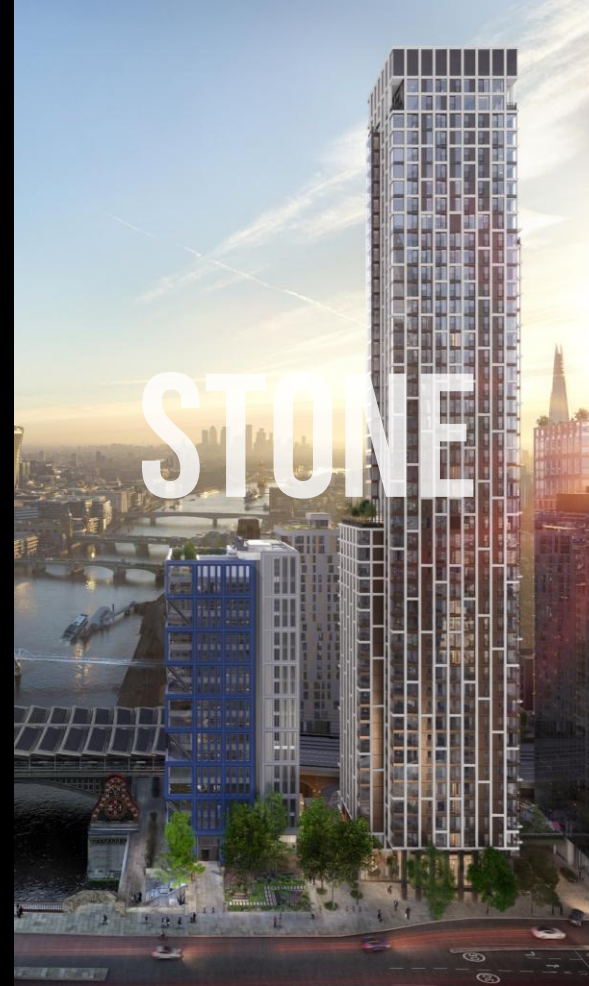
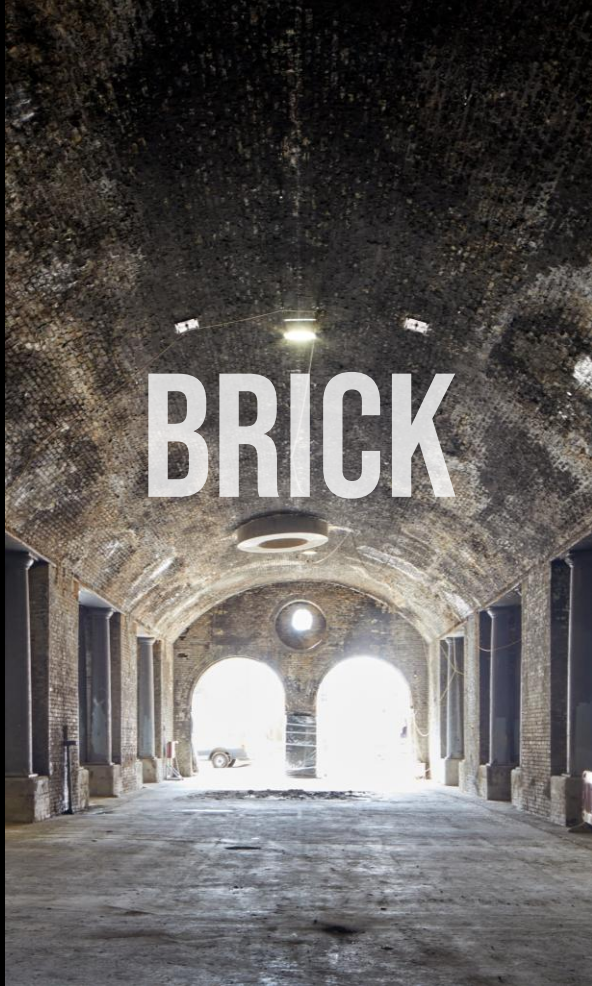
ART



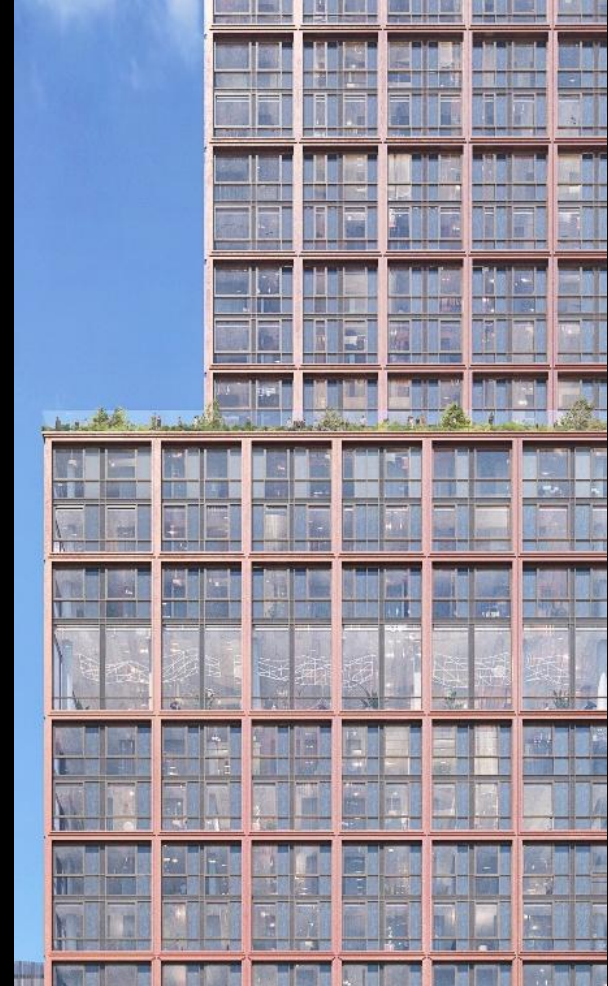
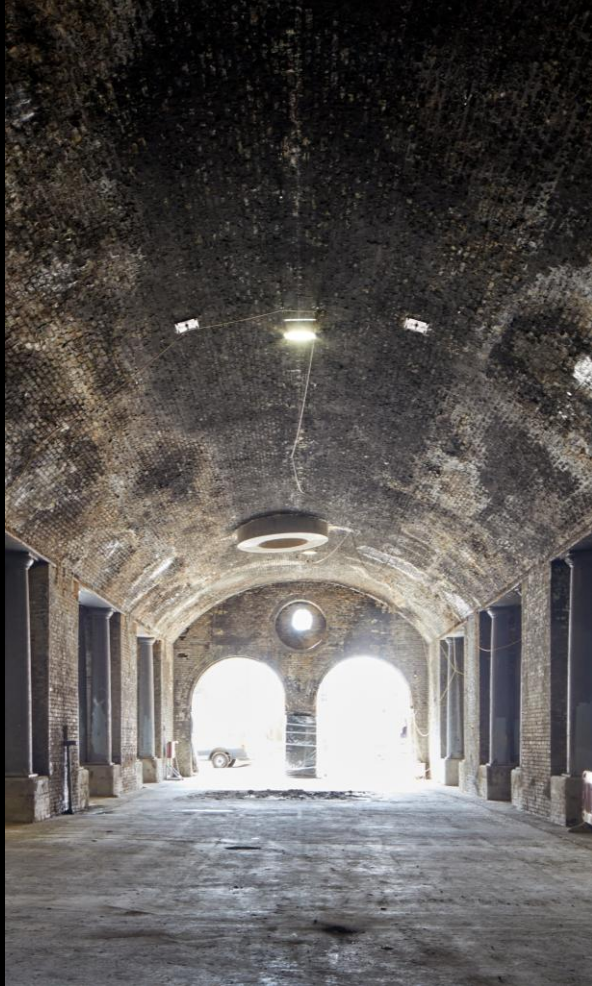
BSY - NECKLACE OF HYPERMIX EXPERIENCE



BSY CLUSTER - CURATED MIXITY OF ARTEFACTS



BSY LOCALITY - CRAFTED FRAMES



ARBOR – HYPERMIXITY OF WORKPLACE



ARBOR – HYPERMIXITY OF WORKPLACE



ENVIRONMENTAL PERFORMANCE



**MASTERPLAN WIDE
5TH GENERATION
ENERGY NETWORK**



**REDUCED URBAN
HEAT ISLAND**
by re-using waste heat



**ZERO
EMISSIONS**



**ALL 8 BUILDINGS
100% electric**



**AIR SOURCE
HEAT PUMPS**



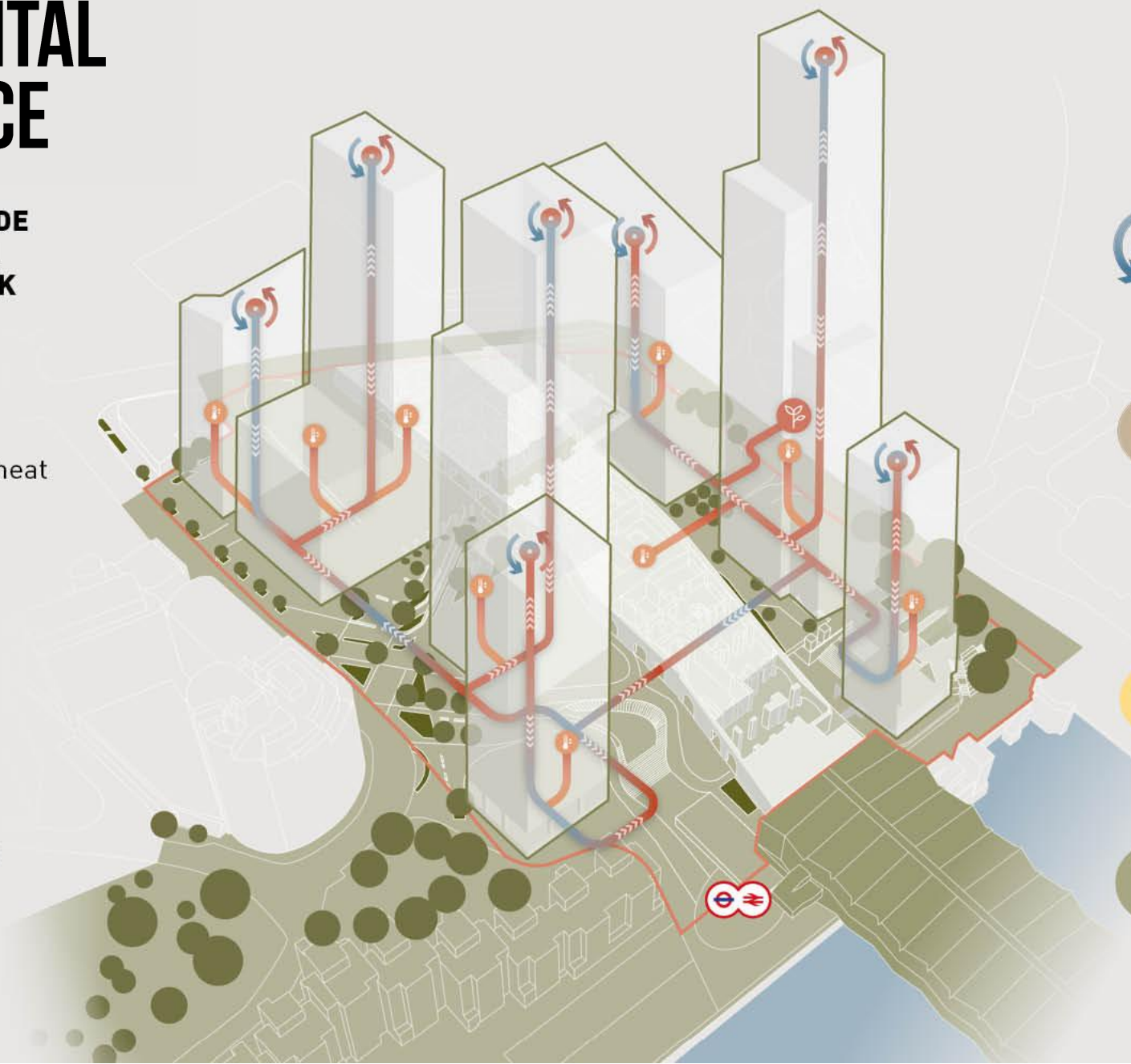
**OPTIMISED FAÇADES AND
EFFICIENT SYSTEMS**
Residential apartments
achieve RIBA 2030 Climate
Challenge operational energy
targets



**BIODIVERSITY
ENHANCEMENT**
150 new trees of 20
different species



WASTE PREVENTION
97% of demolition materials
and >80% construction
waste will be diverted from
landfill



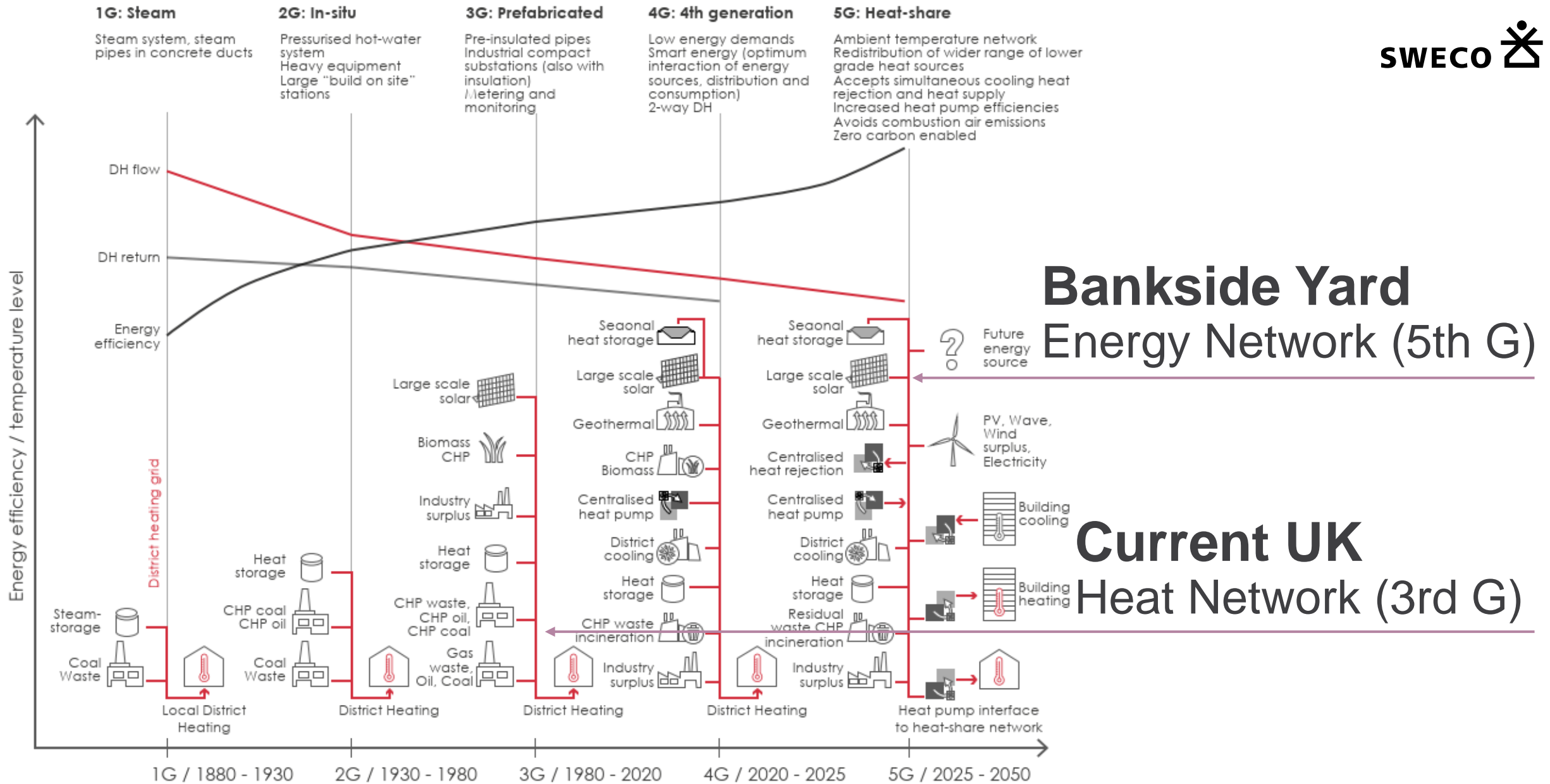


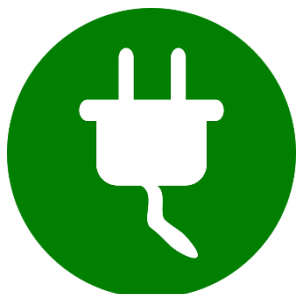
Figure 3.4 - District heating network evolution
Source : Thorsen, J. E., Lund, H., & Mathiesen, B. V. (2018). "Progression of District Heating – 1st to 4th generation". 5th generation adaptation Twinn, C.D.A. (2019)

Source: Thorsen, J. E., Lund, H., & Mathiesen, B. V. (2018). "Progression of District Heating – 1st to 4th generation"

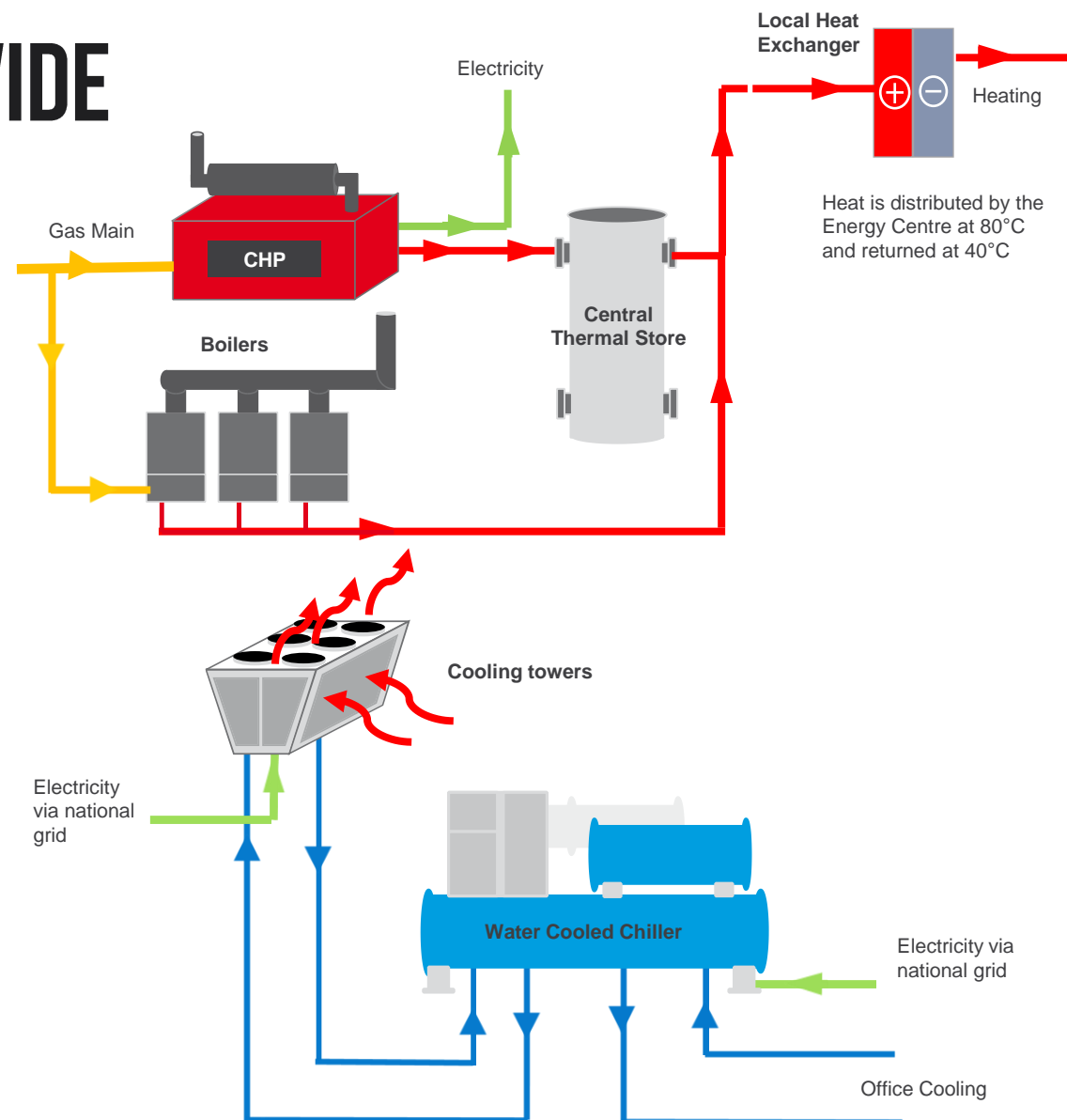
THIRD & FOURTH GENERATION NETWORKS ARE DESIGNED TO PROVIDE HEAT AND COOLING SEPARATELY



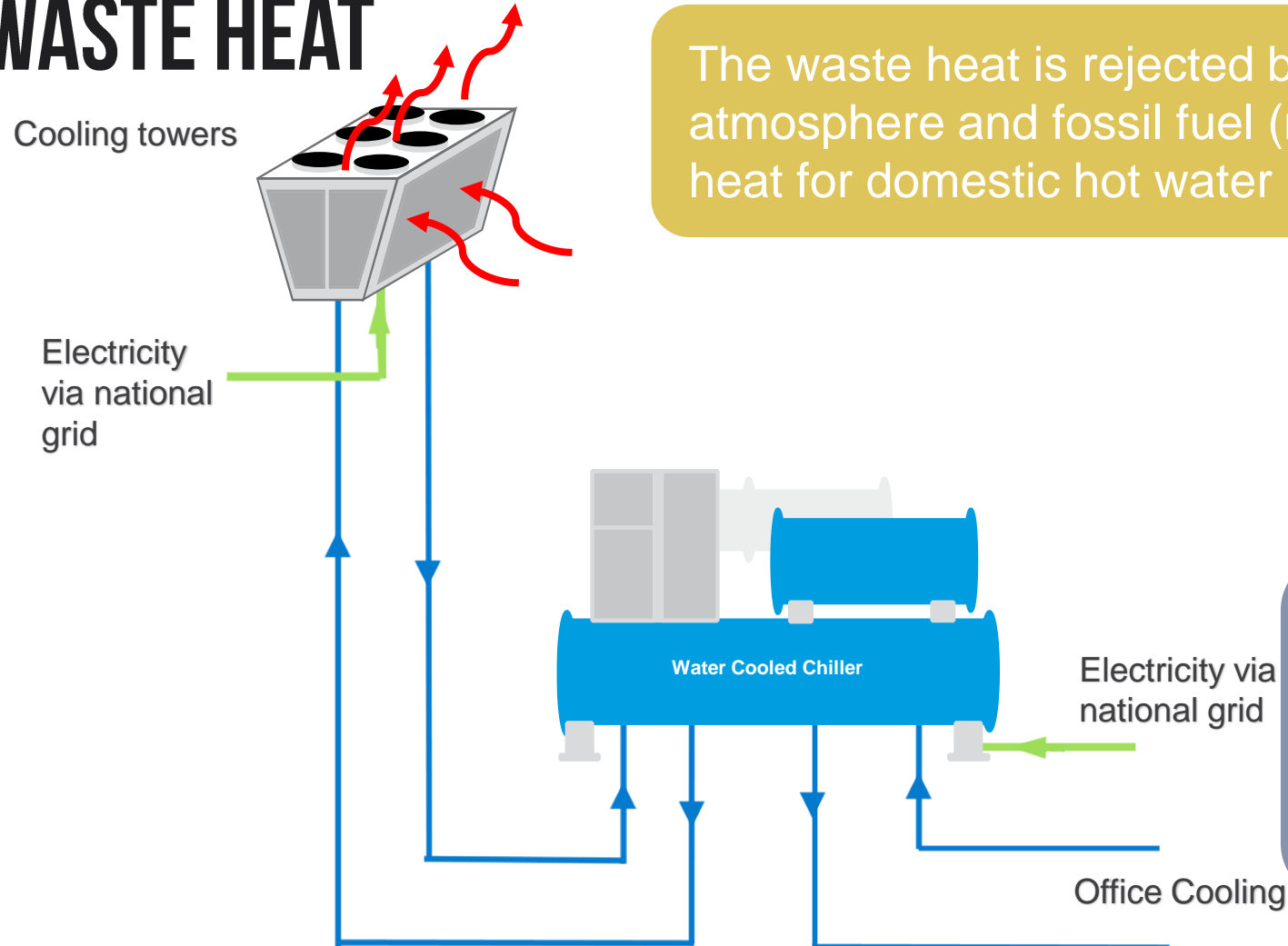
Heating Side



Cooling Side



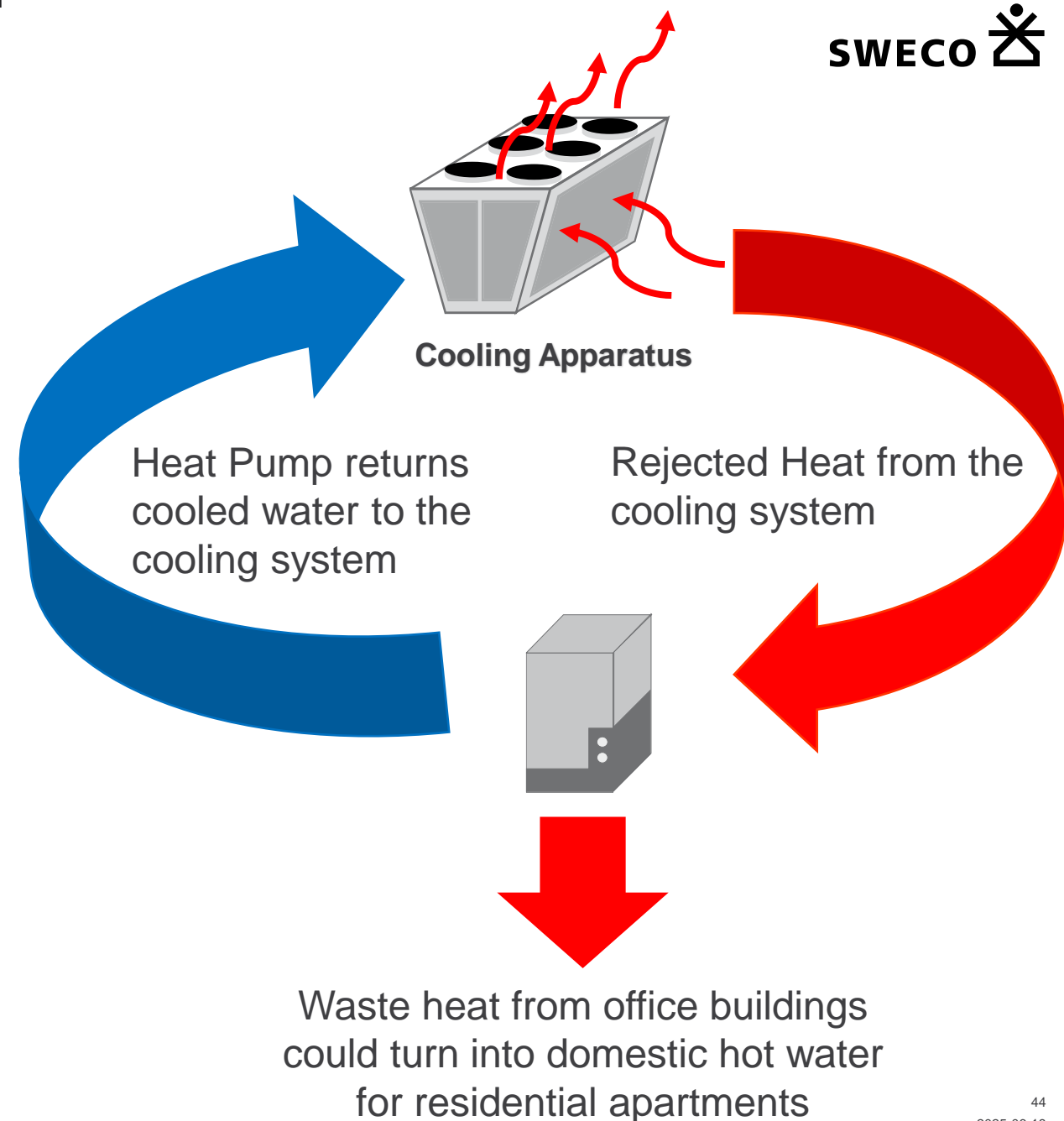
THIRD & FOURTH GENERATION COOLING SYSTEM & GENERATION OF WASTE HEAT



Well insulated building have are enough thermal energy generated by human activity and equipment's to provide for heating majority of the domestic hot water demand.

HARVEST OF LOW WASTE STREAMS OF ENERGY

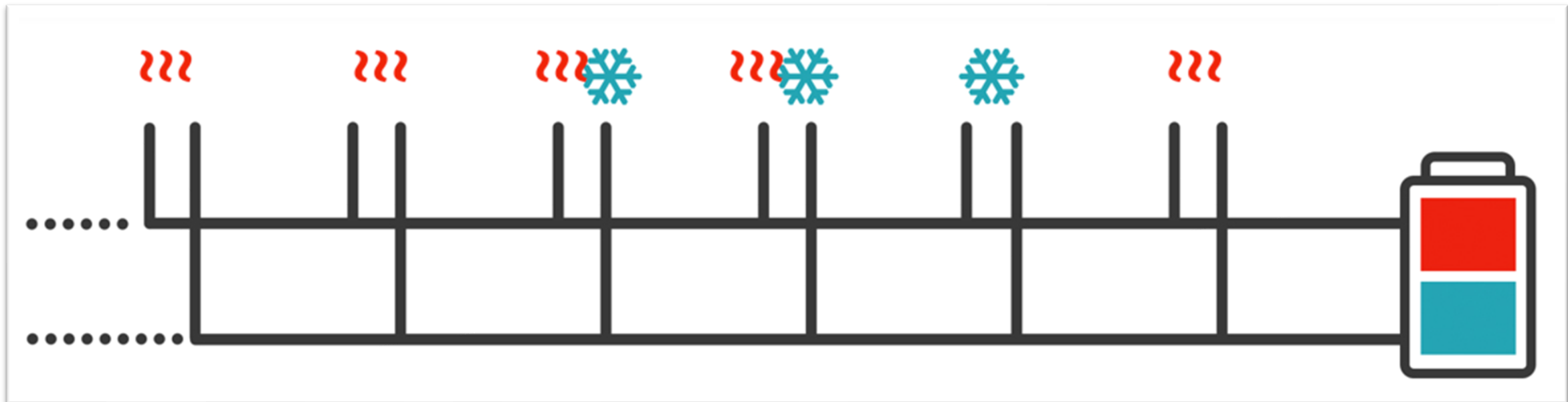
- By connecting parts of the mixed used buildings with different needs and balancing the energy between them.
- It will allow effective use of energy and makes it possible to decrease both pollution and the energy consumption.



HOW DOES THE BANKSIDE YARD NETWORK WORKS?

Buildings connected to the same system provide each other with heating and cooling

”By making a loop of thermal energy streams, 5th Generation network helps provide all the heating and cooling necessary for an entire site.”



SOCIAL VALUE



PUBLIC REALM

makes up 55% of site, with 3 new urban connections



CREATIVE REUSE OF 14 HISTORIC RAILWAY ARCHES

including designated LGBTQ+ cultural space



SUSTAINABLE TRANSPORT

1380 cycle spaces and electric car charging



TOWARDS HYPERMIXITY

exploring the future of urban mixed use



COLLABORATING WITH BETTER BANKSIDE

Thames Beach plastics cleaning



MENTORING YOUNG STUDENTS

with Construction Youth Trust



SUPPORTING LOCAL CHARITIES

fundraising for DePaul and Waterloo Food Bank



VOLUNTEERING

with Bounce Back Foundation



PLP/ARCHITECTURE



Arbor, Bankside Yards, London, UK



PLP/ARCHITECTURE

Arbor, Bankside Yards, London, UK



PLP/ARCHITECTURE



Arbor, Bankside Yards, London, UK



















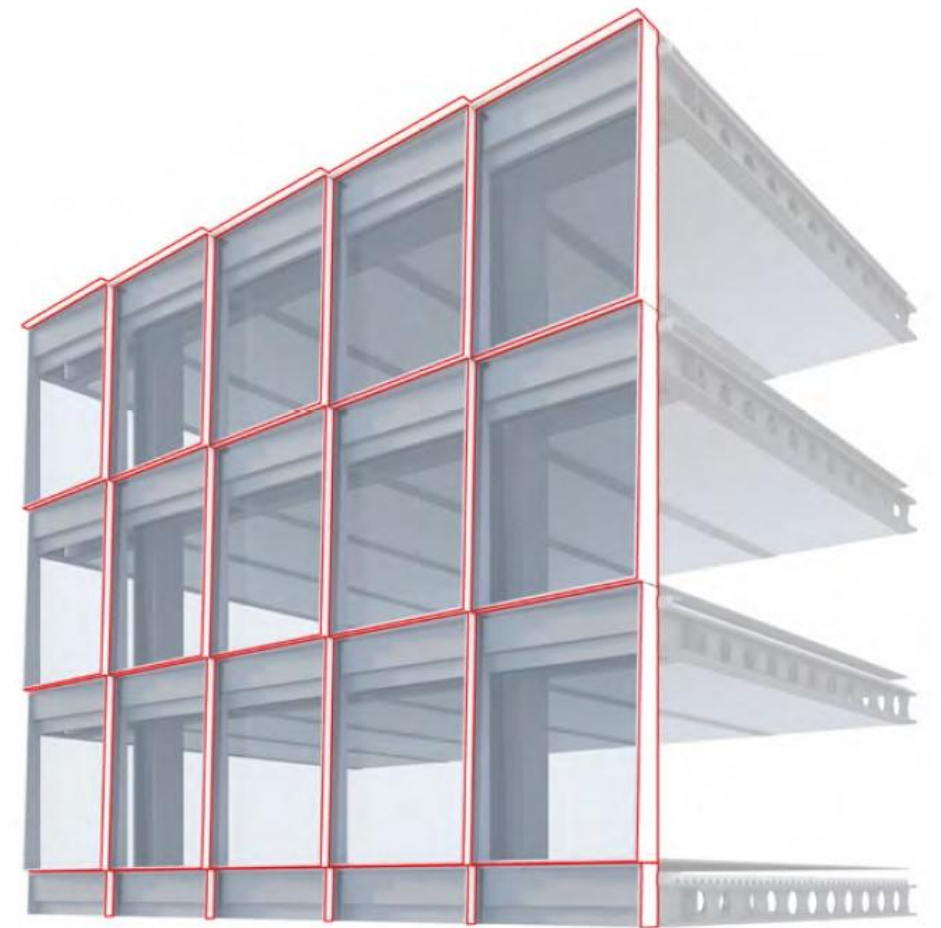
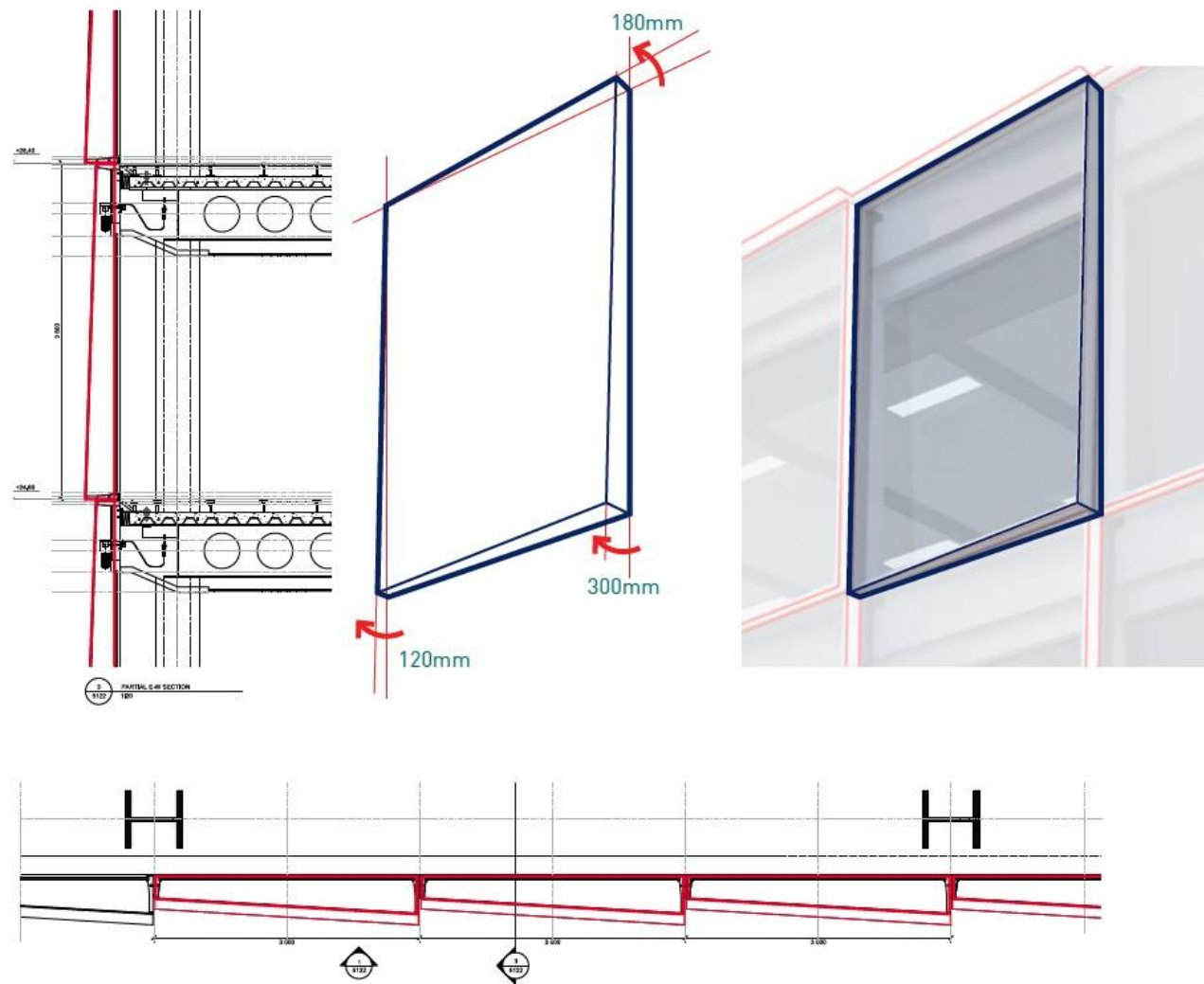




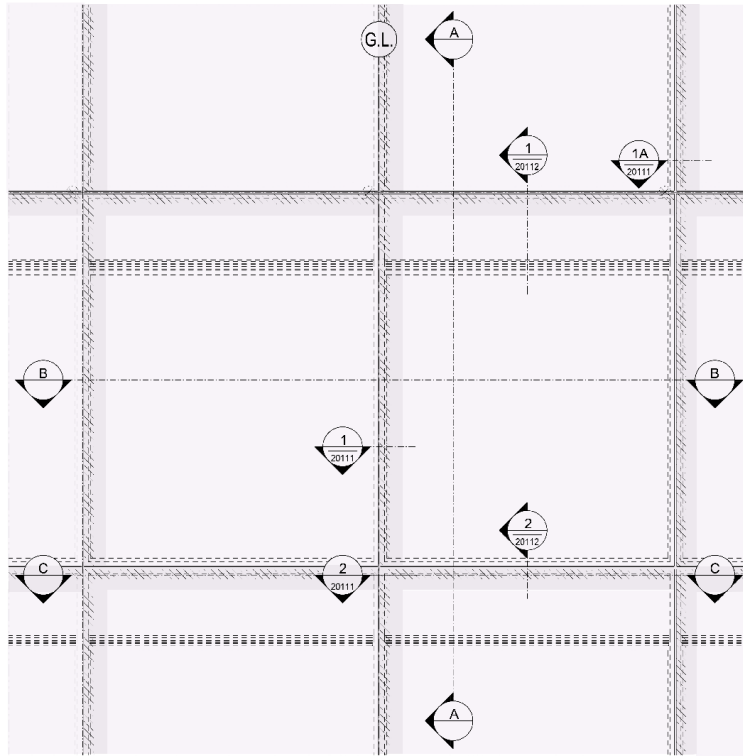




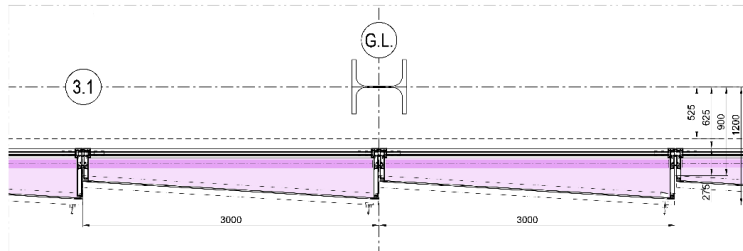




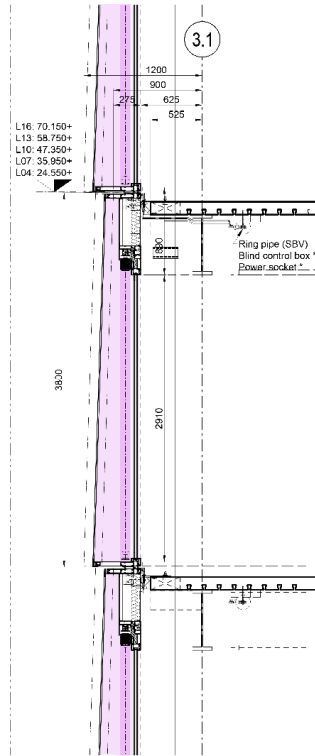
- THE FACADE CONSISTS OF A 3M × 3.8M GRID MODULE USING A PLANAR CCF SYSTEM WITH NO COATING WHICH GIVES MAXIMUM TRANSPARENCY OF THE INSIDE. EACH HUMAN-SCALED FAÇADE MODULE IS INDIVIDUALLY ARTICULATED THROUGH VERTICAL AND HORIZONTAL ROTATIONS ALONG EACH AXIS GIVING THE APPEARANCE OF OVERLAPPING PANELS



1 PARTIAL ELEVATION
FT01B angled
Scale 1:20



B-B HORIZONTAL SECTION
FT01B angled - vision glass
Scale 1:20



A-A VERTICAL SECTION
FT01B angled
Scale 1:20

CCF PERFORMANCE COMPARISON FOR BUILDING BY3

TYPICAL OFFICE GLAZING

G VALUE	0.25 - 0.30
LIGHT TRANSMISSION	50 - 60%

BY3 BLINDS UP

G VALUE	0.50
LIGHT TRANSMISSION	70%

BY3 BLINDS DOWN

G VALUE	0.11
LIGHT TRANSMISSION	18%

AT LEAST 40% MORE DAYLIGHT WITH BLINDS UP

AT LEAST 67% MORE BENEFICIAL SOLAR GAIN

AT LEAST 56% REDUCTION IN SOLAR GAIN WITH BLINDS DOWN

RADIANCE < 100 W/m² WHEN BLINDS ARE ACTIVE



ECO CREDENTIALS

FOSSIL-FUEL FREE

UK's first major fossil-fuel free mixed-use estate.

CARBON ZERO

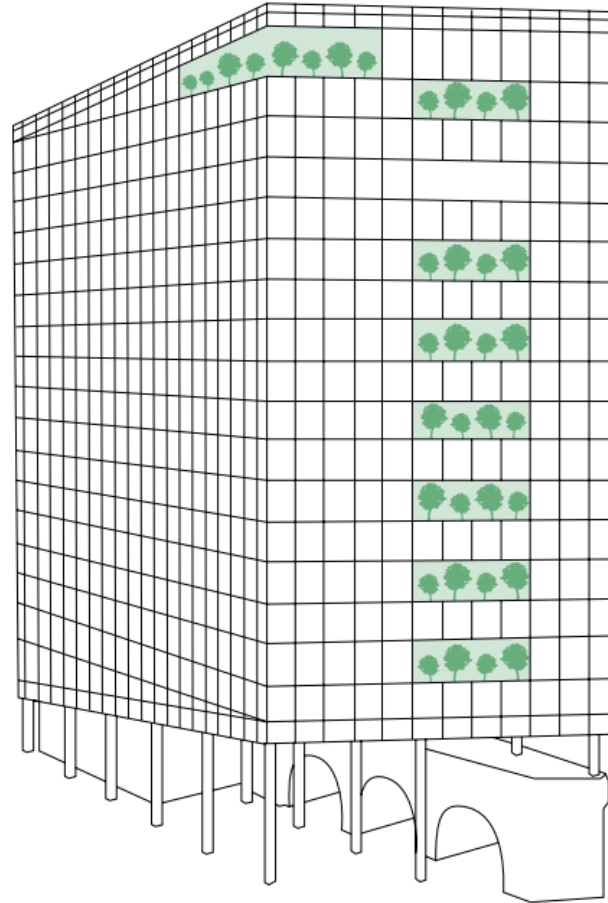
Carbon zero in operation from Day 1.

ENERGY SAVING

Targeting EPC A rating. 30% reduction in energy consumption compared to standard buildings saves energy costs.

SMART METERING

Monitor energy consumption in real time to reduce usage and save costs.



BIODIVERSITY

Bio-diverse green roof to encourage local wildlife and promote ecology.

SMART LIGHTING

Efficient LED lights with sensor controls preventing unnecessary usage.

EFFICIENT VENTILATION

Fresh air up to 13.2 litres/sec/person provides optimal comfort.

LESS CO2

Optimised design creates 45% less carbon dioxide in the building's operation – equivalent to 52 return flights from London to New York every year.



#LondonIsOpen

BANKSIDE YARDS

LONDON SE1