



# Integrated Innovation

The future of Light Gauge Systems

**Darragh Ryan**

**Head of Commercial**

Remagin

March 2025

# Contents

## Part 1

- > Introduction
- > The Traditional LGS Approach
- > Key Elements of an Integrated LGS Solution

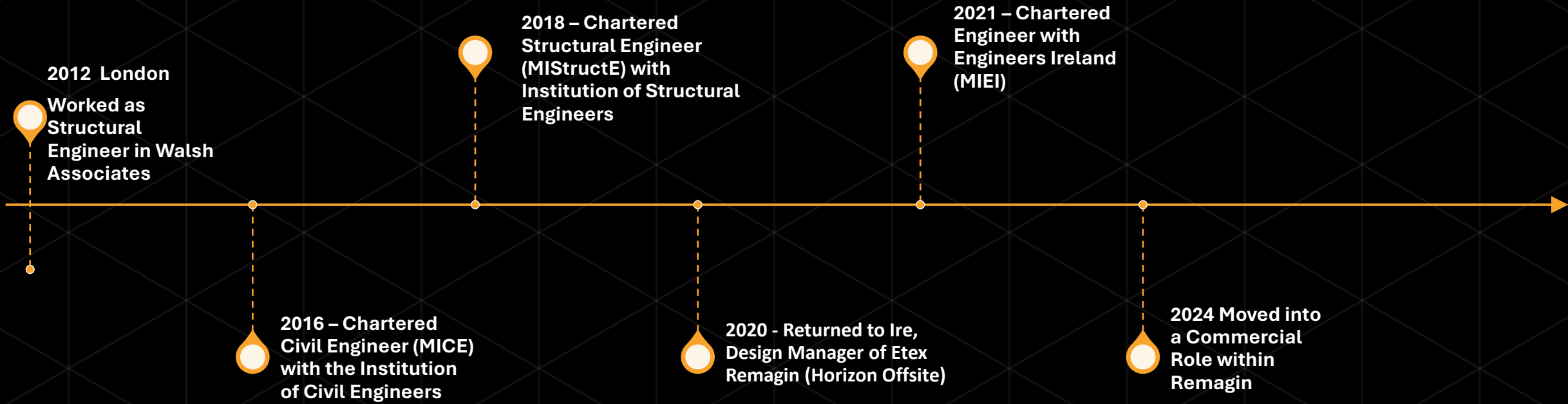
## Part 2

- > Remagin – not just a Light Gauge Steel Frame
- > How we make it easier for clients
- > Case Study: Cloverhill Project



# Introduction

*About me:*



**Key Takeaway:** Explore how Light Gauge Steel (LGS) manufacturers must evolve to provide complete tested solutions, enhancing efficiency, compliance, and client satisfaction.

*"Make it simpler and easier for our clients"*

# Who are Remagin?

Remagin – Light Gauge Steel Company owned by Etex  
Etex are a leader in building materials technologies

The group is organized in 4 divisions:



## Building Performance

Plasterboards and fibre cement boards, and passive fire protection solutions



## Exteriors

Fibre Cement Cladding Products



## Industry

High-performance temperature insulation and fire protection

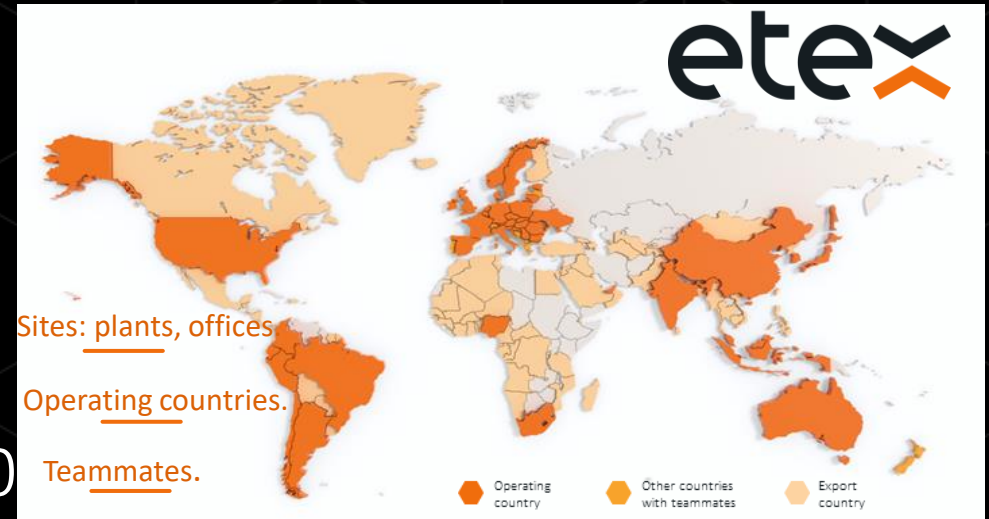


## Insulation

Glass mineral wool, extruded polystyrene (XPS) and more to insulate residential and non-residential buildings.



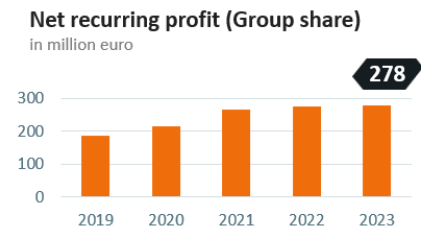
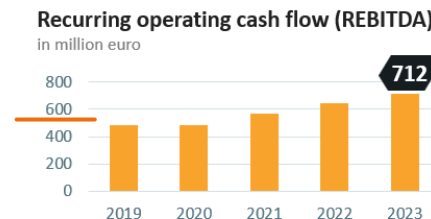
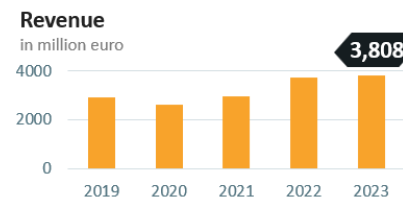
## Strong global manufacturing presence



>160 Sites: plants, offices  
 45 Operating countries.  
 >13,500 Teammates.  
 3,808 EUR million revenue.

## Translating the trust we receive into profitable growth.

Key figures (last 5 years).



## Part 1

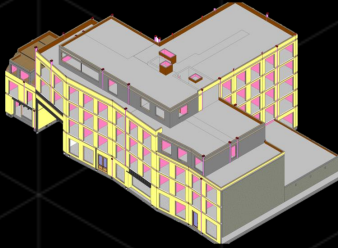
- > Introduction
- > **The Traditional LGS Approach**
- > Key Elements of an Integrated LGS Solution

## Part 2

- > Remagin – not just a Light Gauge Steel Frame
- > How we make it easier for clients
- > Case Study: Cloverhill Project

# The Traditional LGS Approach

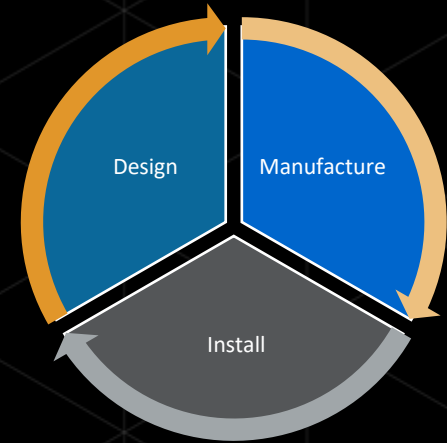
> Design



> Manufacture



> Install



## Limitations of the Current Model



**Primary Focus on Frame Supply** – LGS manufacturers typically stop at structural installation.



**Integration gaps for contractors** – Responsibility for fire performance, acoustic integrity, and finishes falls on third parties, increasing risk and slowing completion



**Inconsistencies in compliance** – Reliance on multiple subcontractors can lead to variations in quality - different systems have slightly different details

# Why We Must Take Ownership



*As LGS specialists, we are best positioned to ensure the system functions as designed.*



*Precision in design and installation should extend to critical interfaces — fire protection, acoustic/thermal performance and external finishes.*



*By completing the system, we improve efficiency, compliance, build quality and make it faster and easier for our clients*



## Part 1

- > Introduction
- > The Traditional LGS Approach
- > Key Elements of an Integrated LGS Solution

## Part 2

- > Remagin – not just a Light Gauge Steel Frame
- > How we make it easier for clients
- > Case Study: Cloverhill Project

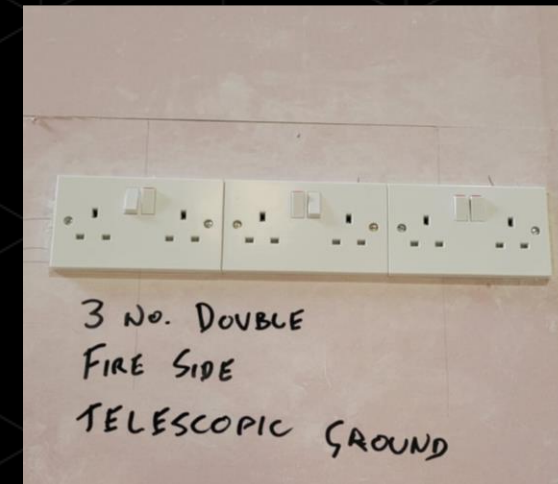


# Key Elements of an Integrated LGS Solution

## 1) Fire Testing & Compliance

- Industry relies on full scale fire tests BS EN 1364 (walls) and BS EN 1365 (floors)
- These tests don't allow for real world site conditions.
- LGS manufacturers must go further by go further by conducting small scale targeted tests to validate fire performance across different scenarios:
  - ✓ Two-sided fire testing
  - ✓ Fire stopping products (sleeves, collars, intumescent strips)
  - ✓ Cavity barriers
  - ✓ Sockets and penetrations
  - ✓ Material compatibility testing

📌 **Key Outcome: A fully tested system where all components are validated together—not just the steel frame.**



# Key Elements of an Integrated LGS Solution

## 2) Finishing the Wall System – Ensuring Performance in Practice

- Fire, Acoustic and Thermal Performance key components are installed and the responsibility of others
- The finishes are part of the System

### The Solution:

- ✓ Plasterboard installation (factory fitted) & inspection
- ✓ Pre-approved tested components

📌 *Key Outcome:* A complete wall system that meets fire, acoustic, and thermal requirements—without guesswork.



# Key Elements of an Integrated LGS Solution

## 3) Structural Integration – Expanding Beyond the Frame

- LGS frames interface with multiple elements (cladding, windows, balconies, stairs)
- These connections are critical to overall building performance but are often treated as separate trades rather than being part of an integrated system

### The Solution:

- ✓ Cladding system installation
- ✓ Stairs, balconies & secondary structure install
- ✓ Windows Factory Fitted

📌 **Key Outcome: A more seamless, robust system that ensures responsibility for performance is single source – making compliance easy**



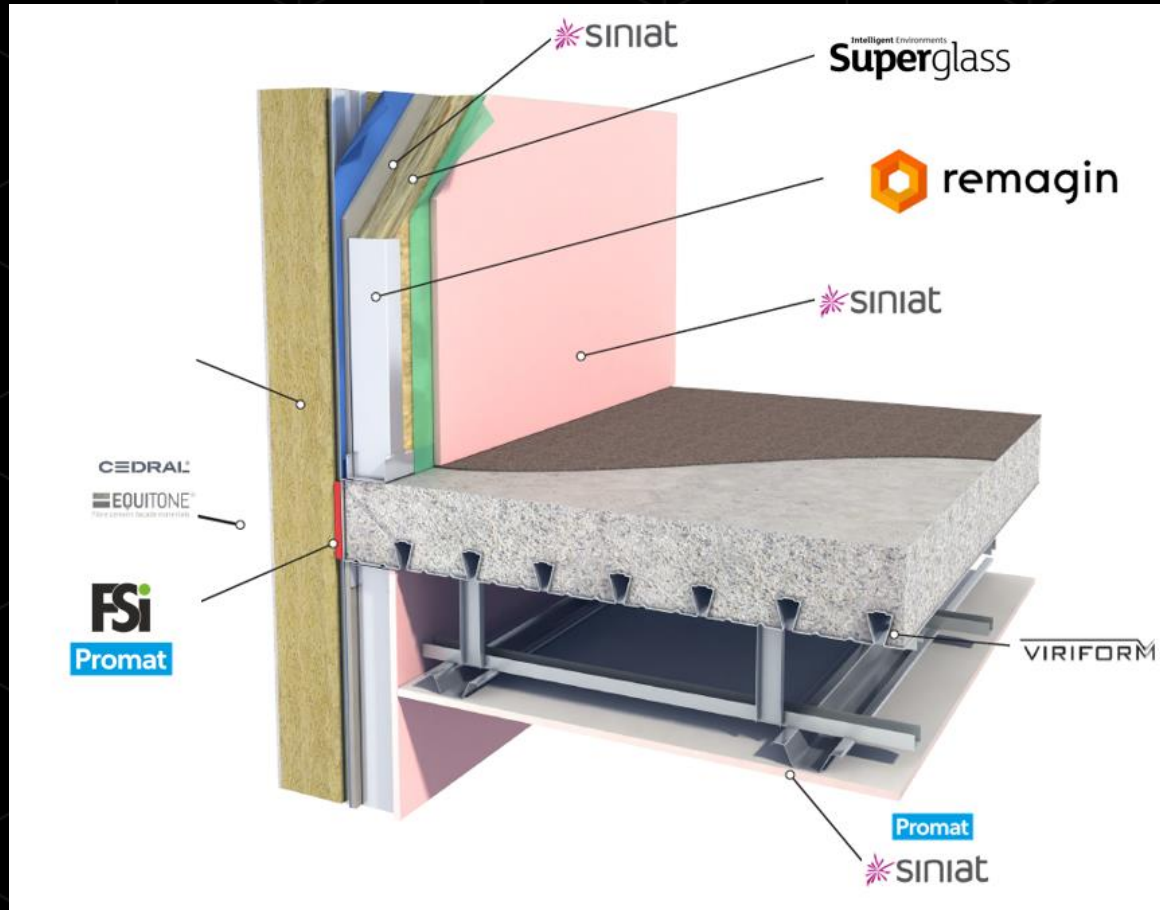
## Part 1

- > Introduction
- > The Traditional LGS Approach
- > Key Elements of an Integrated LGS Solution

## Part 2

- > Remagin – not just a Light Gauge Steel Frame
- > How we make it easier for clients
- > Case Study: Cloverhill Project

# Remagin – Not Just A Light Gauge Steel Frame The Complete ETEX Building Solution



- **Etex Plasterboards (Siniat)**
- **Etex LGS Frame (Remagin)**
- **Etex Composite Decking (Sigdeck and Viriform)**
- **Etex Insulation (Superglass)**
- **Etex Fire Stopping (FSI and Promat)**
- **Etex Cladding (Equitone, Cedral and Eternit)**
- Backed up by in-House Test Centre Capability for Fire, Structural and Climate Testing

## Part 1

- > Introduction
- > The Traditional LGS Approach
- > Key Elements of an Integrated LGS Solution

## Part 2

- > Remagin – not just a Light Gauge Steel Frame
- > **How we make it easier for clients**
- > Case Study: Cloverhill Project

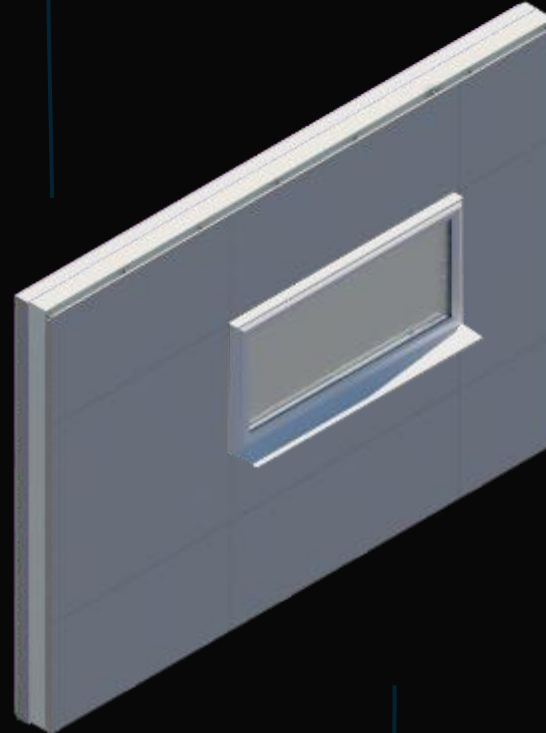
# How Remagin are making it easier for clients:

Air and Vapour Control  
Layer - Factory Installed

Etex Siniat Weather  
Defence Sheathing Board  
Factory Installed

Cavity Closer Around  
Window Openings –  
Remagin Tested –  
Remagin Installed

Windows in Panels  
Factory Installed



2 x Etex Siniat Fire Board  
- Site Installed and  
Remagin Inspected

89mm Remagin LGS Stud  
and Etex Superglass  
Mineral Wool

Helping Hand Brackets &  
Mineral Wool Insulation  
Factory Installed

External Etex Equitone  
Cladding – Remagin Site  
Installed

## Part 1

- > Introduction
- > The Traditional LGS Approach
- > Key Elements of an Integrated LGS Solution

## Part 2

- > Remagin – not just a Light Gauge Steel Frame
- > How we make it easier for clients
- > Case Study: Cloverhill Project

# Project Overview: Cloverhill

*Remagin and Clancy Construction*

## ✓ Project Info:

- Location: Cork
- 3no. Apartment Blocks and 1no. Housing Block
- 1<sup>st</sup> Large Scale MMC Project for Cork Co.Co.
- Tendered to be 70% offsite
- Trust placed in 2D LGS



## ✓ Integrated Innovation in Action:

- Clancy Construction are a forward-thinking collaborative Contractor - “Built on Partnership”
- Experience in MMC and 2D LGS in particular
- Work with the System provider to maximise efficiency and seamless integration across the entire building envelope

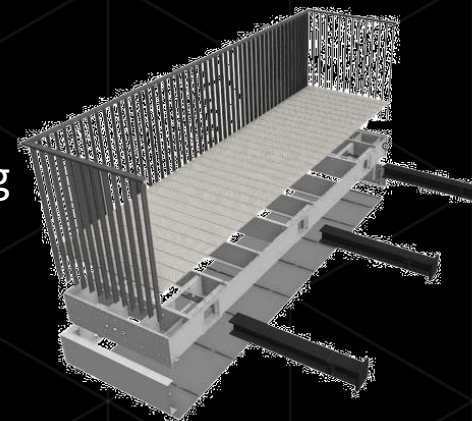
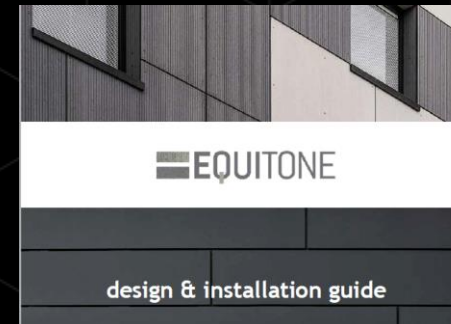
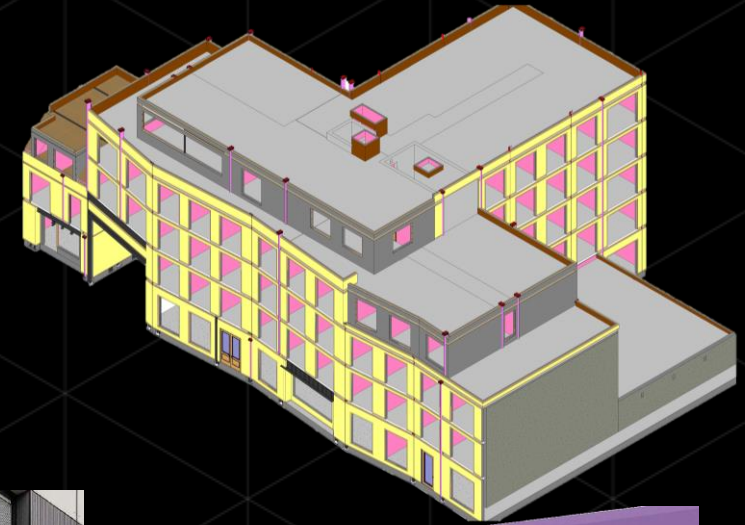


*A streamlined, efficient build process where Clancy can focus on overall project delivery while we handle the details*

# Project Overview: Cloverhill

*Elevating Our System – Delivering More Value*

- **Precast Stairs** – Faster installation, greater efficiency – handrail installed by Remagin (Konnekt)
- **Pre-Boarded Walls** – Reduces site time & labour costs using Siniat Boards
- **LGS Lift Shaft Modules** – Seamless integration between LGS and Lift Manufacturer
- **Windows-in-Panels** – Faster, higher-quality installation
- **Cladding Systems** – Complete external envelope solutions using Etex Cladding Systems. Insulation, brackets and rails all factory installed
- **Fire Stopping** – Full compliance & enhanced safety – using tested Etex FSI products
- **Pre-Finished Balconies & Balustrades** – High-quality, pre-installed solutions which complement our system





# Thank You

E: [darragh.ryan@etexgroup.com](mailto:darragh.ryan@etexgroup.com)