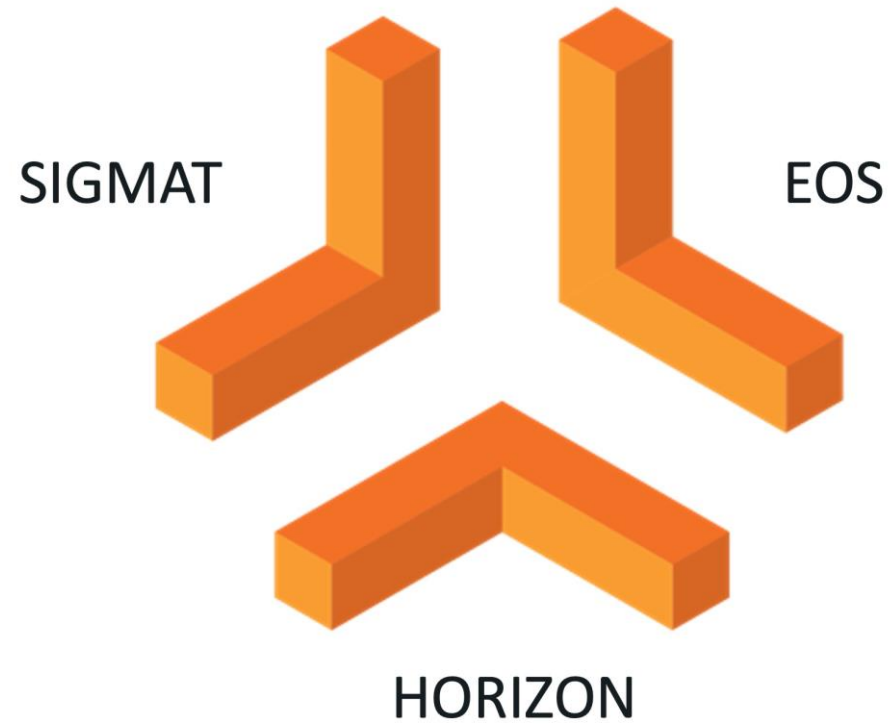


The Use of Light Gauge Steel Frame for Low-Rise Developments

Peter Burchill
National Business Development Manager



BUILT ON SOLID FOUNDATIONS



Part of the Etex Group

UNIQUELY POSITIONED. CONNECTED PORTFOLIO



We present a varied product portfolio tailored for the construction sector, encompassing both load-bearing and non-load-bearing solutions.

As an integral part of Etex, we enhance our systems by seamlessly integrating with other Etex products.

While we are not confined solely to Etex products, this collaboration opens up expanded possibilities and benefits for our valued customers.

Purposeful Performance

INTEGRATED SOLUTIONS



Innovation

Applying our expertise and resource to build for success.



Performance

High quality, high performance. Delivering what is important to you, from design to installation.



Sustainability

We are committed to supporting you to build a more sustainable future.

Our Sectors



Retirement Living



Apartments



Education



Health



Our Sectors



Housing



Student Living



Hotels



Current market landscape



Why LGSF for low-rise developments?



Benefits



Fire Tested



Thermal Acoustic



Speed of Build



Accuracy



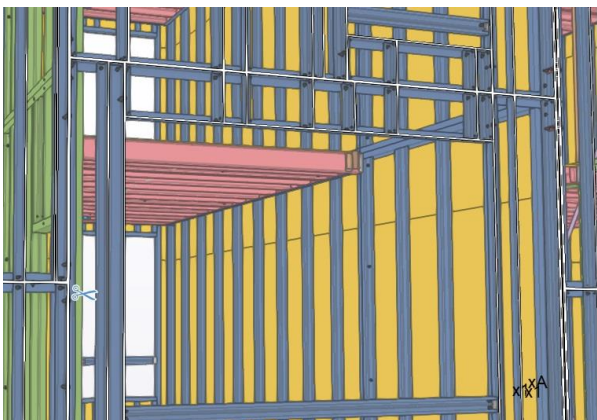
Recycled Materials



Heaton House

Birmingham

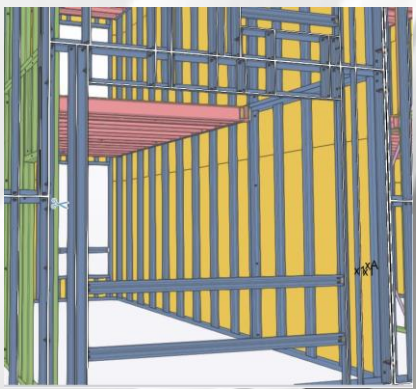
- 14 Town houses
- 42 Apartments blocks
- 2424 m2 GIFA
- 23-week installation











“

This was our first project working with Remagin, and we've been delighted with the results.

The MMC advantage of programme surety and speed of installation on site has encouraged us to select the Remagin LGSF system for our next project.

We look forward to working with the team again.

–Aidan O'Gara, Kavannagh Construction



Hawkes Road

Cork

- 40 houses
- 12 Apartments
- 5,335 m2 GIFA
- 26 week programme





“

The speed and onsite quality of the Remagin system is a massive benefit.

It was a pleasure to work with the team on Hawkes Road and we look forward to working together again.

–Mike O’Sullivan, Director, OBR Group



Any questions?

Peter Burchill

National Business Development Manager

M | +44 7584003184

E | peter.burchill@etexgroup.com